

BAF SHAHEEN COLLEGE KTL

Half yearly Exam -2020

Sub: Biology

Class: IX

Time: 2.30 min

Marks: 50

(Answer any Five)

1.

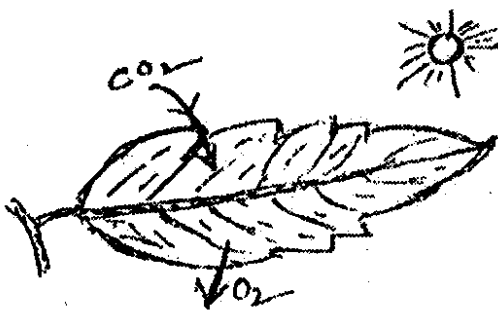


Fig : M



Fig : N

- a. What is photolysis? 1
- b. What do you understand by C_4 plants? 2
- c. Explain the first step of the process mentioned in figure N. 3
- d. The processes M and N are interdependent. — Explain it. 4

2. The secreted juice of two digestive glands turn into simple particles from complex food in the part 'A' of the digestive tube of human body. To reach towards the body cell of this simple particles blood and lymph play role.

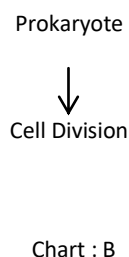
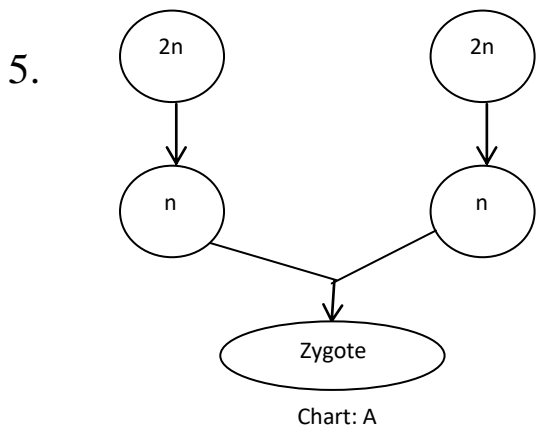
- a. What is Goiter? 1
- b. What do you understand by BMR? 2
- c. How does food turn into simple particles in the part 'A' of the discussed tube? Explain. 3
- d. That simple particles are essential for the structure and function of body. — Analyse it. 4

3. The scientific name of an organism is constituted with two parts which is accepted with the declared principles of ICBN & ICZN respectively, such as *Solanum tuberosum*, *Nostoc*, *Penicilium*.

- a. Write down the scientific name of the national bird. 1
- b. Write the functions of mineral salt. 2
- c. Write down the characteristics of the kingdom of the 1st organism mentioned in the stem. 3
- d. 2nd & 3rd organisms mentioned in the stem are not included in the same kingdom, analyze the statement. 4

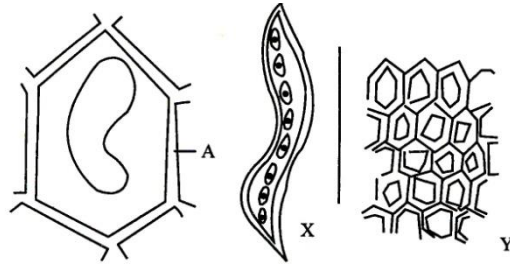
4. Tushar was watching a program on television about the negative effect of “food adulteration”. Then his mother wanted to go the doctor with him due to some health problem. When he went to there the doctor told Tushar’s mother, “You are suffering from Anemia”

- a. What is roughage? 1
- b. What do you mean by food assimilation? 2
- c. Write the causes and treatment for the health problem of Tushar’s mother. 3
- d. Discuss the negative effect on human lives of the topic shown in the television. 4



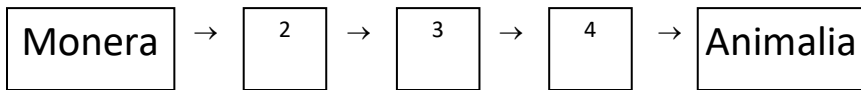
- a. Write down the full form of ICBN 1
- b. What do you mean by classification? 2
- c. How the chart 'A' is related with the living being? Explain it. 3
- d. What role will be played by the chart 'B' for our economic development? Write it with your logic. 4

6.



- a. What is true cell? 1
- b. Explain cardiac muscle. 2
- c. Explain structure of marked part "A" of stem. 3
- d. Analyze similarities and dissimilarities of X and Y according to stem. 4

7. Living world divided into five kingdom. Such as □



- a. Define body cell. 1
- b. What do you mean by involuntary muscle? 2
- c. Diatom belongs to which kingdom in the stem. Explain. 3
- d. Analyse with logical causes of gradually advancement of kingdom in the stem. 4

8. There are two types of translocation or transportation in plants body. Firstly, water and minerals are absorbed from the soil by the up words translocation leaves are distributed to the different parts of the plants body by the down words translocation process. These two types of processes are occurred through the complex tissues.

- a. What is sclereids? 1
- b. What do you mean by simple epithelial tissue? 2
- c. Explain the structure of above mentioned tissues. 3
- d. Tissues are very important for us who are mentioned above - Explain this statement. 4

MCQ:

25X1=25

1. Branches of applied biology are-

- i. Medical science ii. Genetics iii. Environmental science

Which one is correct? (a) i & ii (b) i & iii (c) ii & iii (d) i, ii & iii

2. Information about Carolus Linnaeus-

- i. Writer of the book- 'On the cause of plants'
ii. Professor of Anatomy and physician
iii. Introduced the binomial system of nomenclature.

Which one is correct? (a) i & ii (b) i & iii (c) ii & iii (d) i, ii & iii

3. The aim of classification is-

- i. to know about the sub-ranks of organism ii. to be able to name the units of organism iii. to present the knowledge in detail

Which one is correct? (a) i & iii (b) i & ii (c) ii & iii (d) i, ii & iii

4. How many types of primary xylem?

- a. 1 b. 2 c. 3 d. 4

5. Which of the following living cells has cytoplasm but no nucleus?

- (a) Parenchyma (b) Sieve tube (c) White blood cell (d) Neuron

6. Which stage ends when the chromatids reach near the pole?

- (a) Prophase (b) Anaphase (c) Metaphase (d) Telophase

7. Which of the following two genes of papilloma virus are responsible for the development of cancer cells?

- (a) E₄ and E₅ (b) E₅ and E₄ (c) E₆ and E₇ (d) E₇ and E₈

8. Which one is correct for bast fibre?

- a. Forms sieve tube b. Attached with the cell membrane c. Form sieve plate
d. None

9. Chlorophyll Plays important role-

- i) in the creation of ATP ii) in the creation of CO₂
iii) in the creation of NADPH + H⁺

Which one of the following is correct? (a) i and ii (b) i and iii (c) ii and iii
(d) i, ii and iii

10. How much inorganic nutritional elements have been identified in plants?

- (a) 60 (b) 50 (c) 20 (d) 70

11. Present of which element makes the blood red?

- a. Calcium b. Magnesium c. Ferrum d. Potassium

12. Which branch discusses the prehistoric life forms and fossils?

- a. Botany b. Soil science c. paleontology d. Genetic engineering

13. Which is the percentage of body weight of human body consists of water?

- (a) 30 – 40% (b) 40 – 55% (c) 50 – 60% (d) 45 – 60%

14. What is the name of the folding's of a cell membrane?

- a. Villi. b. Microvilli c. Cristae d. Matrix

15. What is the indicator of the used energy at resting stage of human being?

- (a) BMR (b) BMI (c) Calorie (d) Joule

16. The tooth typically consists of – parts.

- a) 2 b) 4 c) 3 d) 5

17. How many teeth each half of the jaw bears?

- a) 6 b) 8 c) 10 d) 16

18. The main part of the tooth consists of hard substances called-

- a) Dentine b) Enamel c) Pulp d) Cement

19. The symptoms of simple goiter are-

- i) idleness ii) sleeplessness iii) dry cough

Which one of the following is correct?

- (a) i and ii (b) i and iii (c) ii and iii (d) i, ii and iii

20. Why man is heterotrophic?

- a. Present complex type of tissue system b. Cell wall absent c. Cell vacuole small
d. None

21. Which tissue provides rigidity to *Leucas* plant?

- a. Tracheids. b. Vessel c. Sclerenchyma d. Collenchyma

22. In which branch of Biology "survival of the fittest" is discussed?

- a. Embryology b. Evolution. c. Histology d. Parasitology

23. O₂ is produced during photosynthesis process

- Because of --- i. Oxidation – reduction reaction ii. light dependent phase iii.
van-neeel reaction

Which one of the following is correct? a. i b. ii c. i & ii d. i, ii & iii

24. Which kingdoms organisms are used for the treatment of diabetes?

- a. Monera. b. Fungi. c. Plantae d. Protista

25. Which one is archegoniate?

- a. Mushroom. b. Penicillium c. Jackfruits d. None